



Save the Dates!

An Invitation to Become a CSEFEL Pyramid Model Coach

Four Intensive ToT Days + Two Days of Coach Training

Series 1: March 11, 12, & 13 and April 15, 16, & 17, 2010 (Sacramento)

Series 2: May 13, 14, & 15 and June 10, 11, & 12, 2010 (San Diego)

Registration fee is \$300.00 for all six days (includes breakfast, lunch, and materials)

Strategies to Promote the Social Emotional Competence of Infants and Young Children and Address Challenging Behavior: The CSEFEL Pyramid Model

Support implementation through on-site coaching! This is an opportunity for you to participate in an advanced training about the Pyramid Model and practices, learn from the **National Center on the Social and Emotional Foundations for Early Learning (CSEFEL)** staff, and become a resource to your community and California. Coaches will be selected based on the application, experience, and geographic distribution. Coaches will need to attend all six days of the CSEFEL Pyramid training events: the four Train the Trainer sessions and the two coach training days.

Requirements: Coaches will have earned a BA in Child Development or a closely related field, will have five years of experience working with young children preferably in group settings, and will have knowledge and education regarding developmentally appropriate practices. Excellent oral and written communication skills, competent and strong interpersonal skills are a must along with the ability to communicate using technology, develop reports, and track data. Coaches will also be diverse in languages both spoken and written. Experience in child and program assessment, and knowledge of program quality rating scales is also needed. Knowledge and expertise in California's *Learning & Development Foundations* is required. Experience and/or education in adult learning, and experience and/or education in Human Service work, and/or mental health consultation, desired. In order to be considered, applicants must:

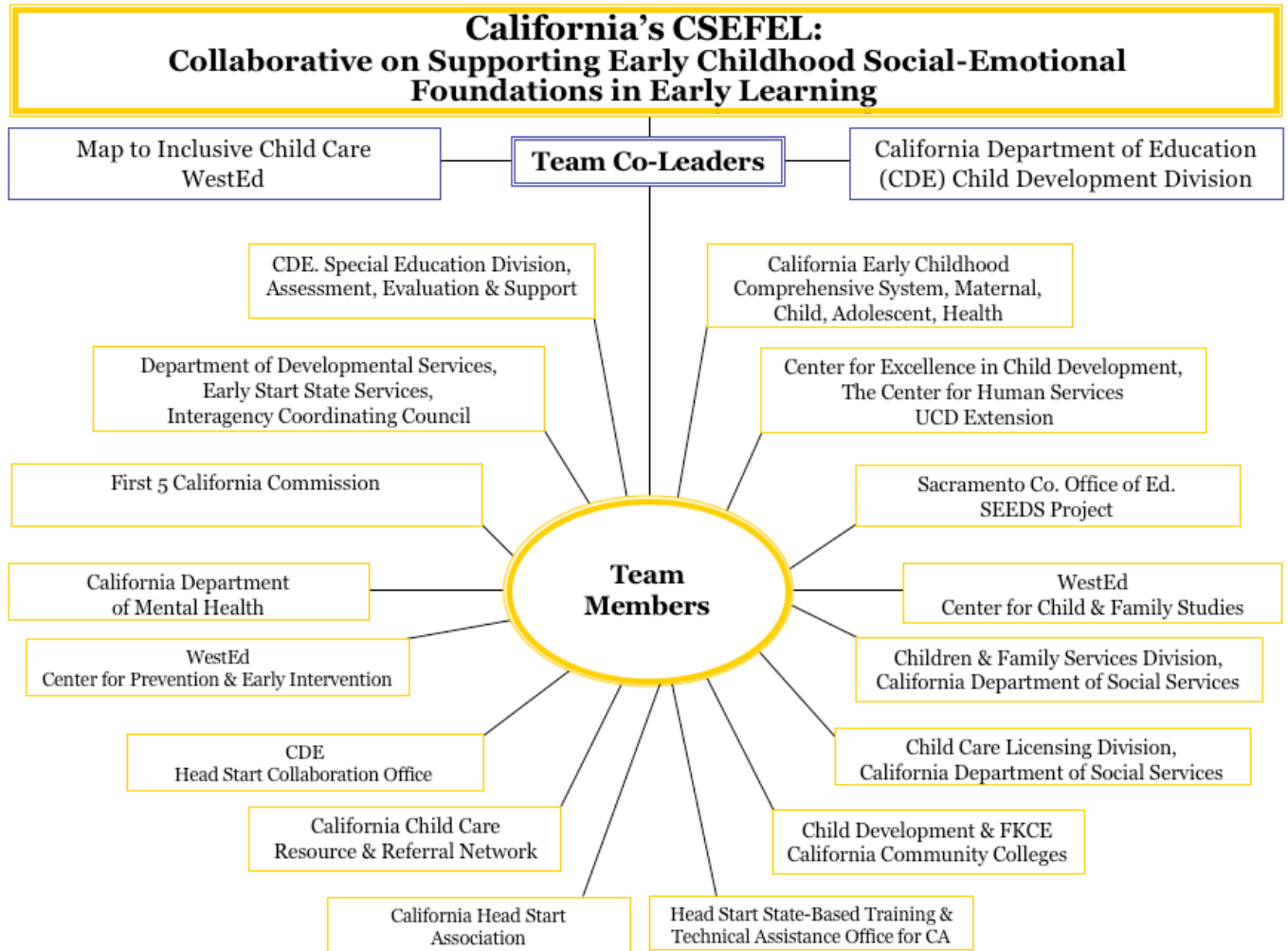
- Commit to all six days of training
- Serve as CA/CSEFEL Pyramid Model coach for at least three years providing training and on-going coaching to at least one classroom/family child care home in your community
- Have resources/job to support this role, as additional funding for coaching is not available
- Participate in ongoing training and technical support from CSEFEL staff including, observation, coaching, and web support
- Collect data as required by the CSEFEL project on the effectiveness of this institute
- Coach only on the CSEFEL Pyramid Model when acting as a CSEFEL coach
- Work with the state team to strengthen policies and systems to sustain evidence-based practices such as the Pyramid Model at the local level

The frequency of a coach's on-site visits will be individually determined with the program and CSEFEL staff. The program may be one with which you are already associated/employed. CSEFEL staff will provide phone support to coaches as they work with at least one program in their area to adopt the Pyramid strategies.

Online applications will be available January 8, 2010

Please apply for the Train-the-Trainer Series and complete the additional questions for Coaches

On 01/08/10 the application will be linked from <http://www.cainclusivechildcare.org/camap/csefel.html>



This event is supported by the National Center on the Social and Emotional Foundations for Early Learning (CSEFEL). CSEFEL is working with the California Collaborative (multi-agency membership), the California Department of Education Child Development Division, and WestEd in this initiative.

For more information about CSEFEL and the CA/CSEFEL partnership, go to <http://www.cainclusivechildcare.org/camap/csefel.html>

If you have questions about CA CSEFEL, please contact map@wested.org