

# Save the Dates!

## A Train-the-Trainer Event for California



Promoting Social Emotional Competence in California's Young Children

### Four Intensive Days

**Series 1: March 11 & 12, and April 15 & 16, 2010 (Sacramento)**

**Series 2: May 13 & 14, and June 10 & 11, 2010 (San Diego)**

Registration fee is \$200.00 for all four days (includes breakfast, lunch, and materials)

*3 more series will be offered in the 2010-2011 year as well as 2 faculty institutes for higher education*

**Application and registration materials available online January 8!**

The application will be linked from [www.cainclusivechildcare.org/camap/csefel.html](http://www.cainclusivechildcare.org/camap/csefel.html)

**Participants must agree to attend all four days of training and deliver training on the Pyramid Teaching Model.**

### **Strategies to Promote the Social Emotional Competence of Infants and Young Children and Address Challenging Behavior: The CSEFEL Pyramid Model**

The California Collaborative (*see multi-agency list on page 2*) and the National Center on the Social and Emotional Foundations for Early Learning (CSEFEL) are offering a unique training opportunity on promoting children's social-emotional competence and preventing and addressing challenging behaviors. The evidence-based materials used for this training were developed by CSEFEL and are most useful in addressing the social-emotional needs of young children ages birth to five years of age. The content of this training reflects a commitment to promoting social-emotional development in all young children using preventive strategies but recognizes the need for more intensive interventions when children have significant social-emotional needs and challenging behavior. Primary content areas related to supporting children's social-emotional development include:

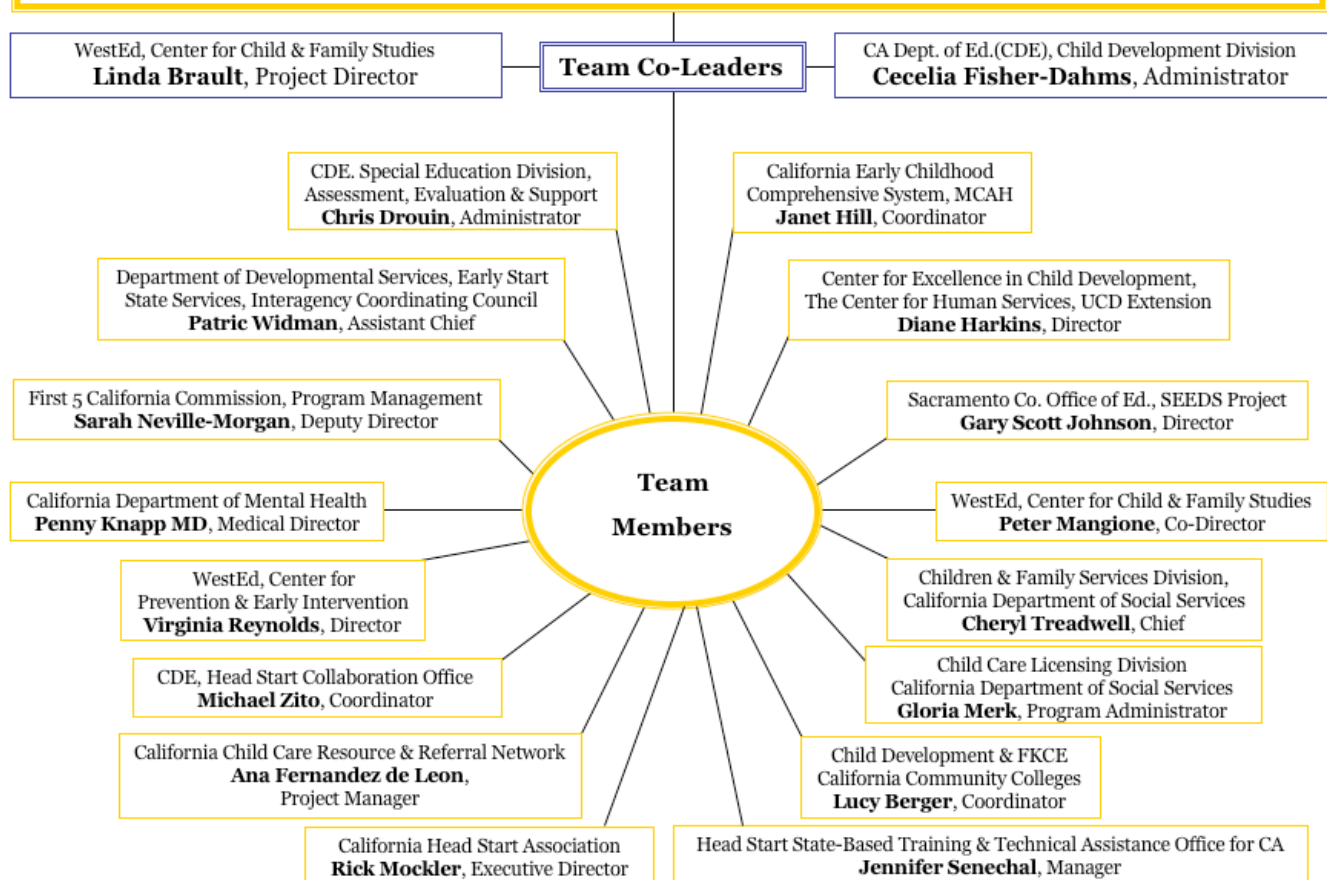
- Preventive Practices
- Intensive Individualized Interventions for Children with Significant Challenging Behaviors
- Social Emotional Teaching Strategies
- Leadership Strategies that Support the Use of These Practices in Local Programs

**Who Should Attend:** In-service and pre-service trainers and faculty, mentors, coaches, consultants, supervisors and others who provide direct professional development training of early childhood professionals. **Participants will select one of two tracks: infant-toddler or preschool.** Space is limited in order to create an optimal learning environment and meet individual needs. There will be an application process to attend the Training of Trainers. Participants will be selected based on training experience, training commitment, and geographic location described in the application.

Registration fee is \$200.00 for all four days (includes breakfast, lunch, and materials). Lodging, additional meals, and travel costs are the responsibility of the participant.

**DISTRIBUTED 12/15/2009**

## California's Collaborative for CSEFEL: Supporting Early Childhood Social-Emotional Competence



The event is supported by the National Center on the Social and Emotional Foundations for Early Learning (CSEFEL). CSEFEL is working with the California Collaborative (multi-agency membership), the California Department of Education Child Development Division, and WestEd in this initiative.

For more information about CSEFEL and the CA/CSEFEL partnership, please visit <http://www.cainclusivechildcare.org/camap/csefel.html>

If you have questions about CA CSEFEL, please contact [map@wested.org](mailto:map@wested.org)

**DISTRIBUTED 12/15/2009**